

The Lockhart

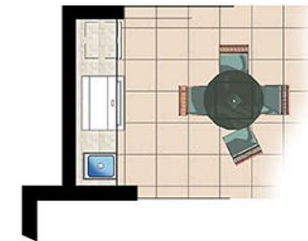
5-6 BEDROOMS, 5.5 BATHS, THEATER, GAME ROOM, 3-CAR GARAGE
 LIVING AREA: 4,235 SQUARE FEET
 TOTAL AREA: 5,560 SQUARE FEET



First Floor Plan



Optional Fireplace/TV on Lanai



Optional Summer Kitchen on Lanai

Lockhart Model

5 Bedroom, 5 Bath, 1 Half Bath
 3 Car Garage

Square Footage Calcs

First Floor Living Area	2051 sq. ft.
Second Floor Living Area	2,184 sq. ft.
Total Living Area	4,235 sq. ft.
Garage	633 sq. ft.
Front Entry	44 sq. ft.
Lanai	270 sq. ft.
Rear Balcony	303 sq. ft.
Front Balcony	75 sq. ft.
Total Building Area	5,560 sq. ft.

The Lockhart II

5 BEDROOMS, 4.5 BATHS, THEATER, BONUS ROOM, 3-CAR GARAGE
 LIVING AREA: 4,671 SQUARE FEET
 TOTAL AREA: 5,847 SQUARE FEET



Lockhart II Model
 5 Bedroom, 4 Bath, 1 Half Bath
 3 Car Garage

Square Footage Calcs

First Floor Living Area	2,040 sq. ft.
Second Floor Living Area	2,631 sq. ft.
Total Living Area	4,671 sq. ft.
Garage	630 sq. ft.
Front Entry	49 sq. ft.
Lanai	229 sq. ft.
Front Balcony	75 sq. ft.
Rear Balcony	193 sq. ft.
Total Building Area	5,847 sq. ft.



OPTIONAL WET BAR
(IN LIEU OF TECH AREA)

SECOND FLOOR